

827 Fairways Court

STOCKBRIDGE, GA



PROFESSIONAL SUITE AVAILABLE

RENTAL RATE: including Base Year Taxes, Insurance, CAM and Utilities (does not include in suite janitorial)



Suite 301 / 304 2,300 SF

Executive Suite with private bathroom and balcony

5 Offices

Executive office with wet bar and balcony access.

Suite 305 425SF

Rental Rate: \$1,200 Monthly

Great Professional Small Suite
2 Pass through Offices

SINGLE OFFICE FOR RENT

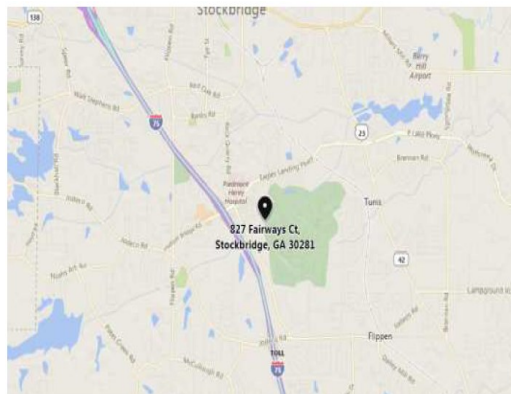
\$950 190 SF

Utilities, Op Exp included in Monthly rental amount.

Tenant responsible for In Suite Communication and Janitorial

NEAR BY AMMENITIES:

- Access to Piedmont Henry Medical
- Serene Professional Environment
- Ample Parking
- High Quality Construction
- Easy Access to Interstate



LEASING CONTACT:

Tom Ellis:

1215 Eagles Landing Parkway
Suite 204
Stockbridge, GA 30281
Phone: 770-507-5155

ATLANTA SOUTH
COMMERCIAL PROPERTIES, INC.



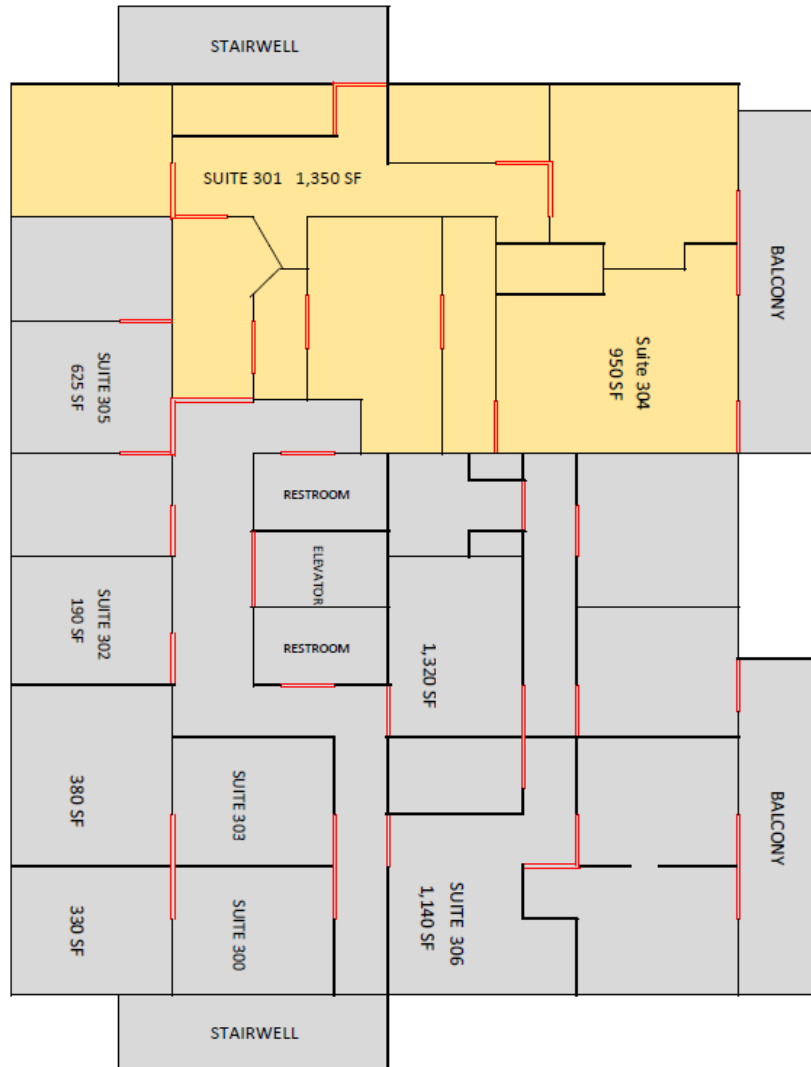
827 Fairways Court

STOCKBRIDGE, GA



Suite 301/ 304

2,300 SF



NOT TO SCALE

LEASING CONTACT:

Tom Ellis:

1215 Eagles Landing Parkway

Suite 204

Stockbridge, GA 30281

Phone: 770-507-5155

Email: info@atlantasouthinc.com / Website: www.atlantasouthinc.com

ATLANTA SOUTH
COMMERCIAL PROPERTIES, INC.



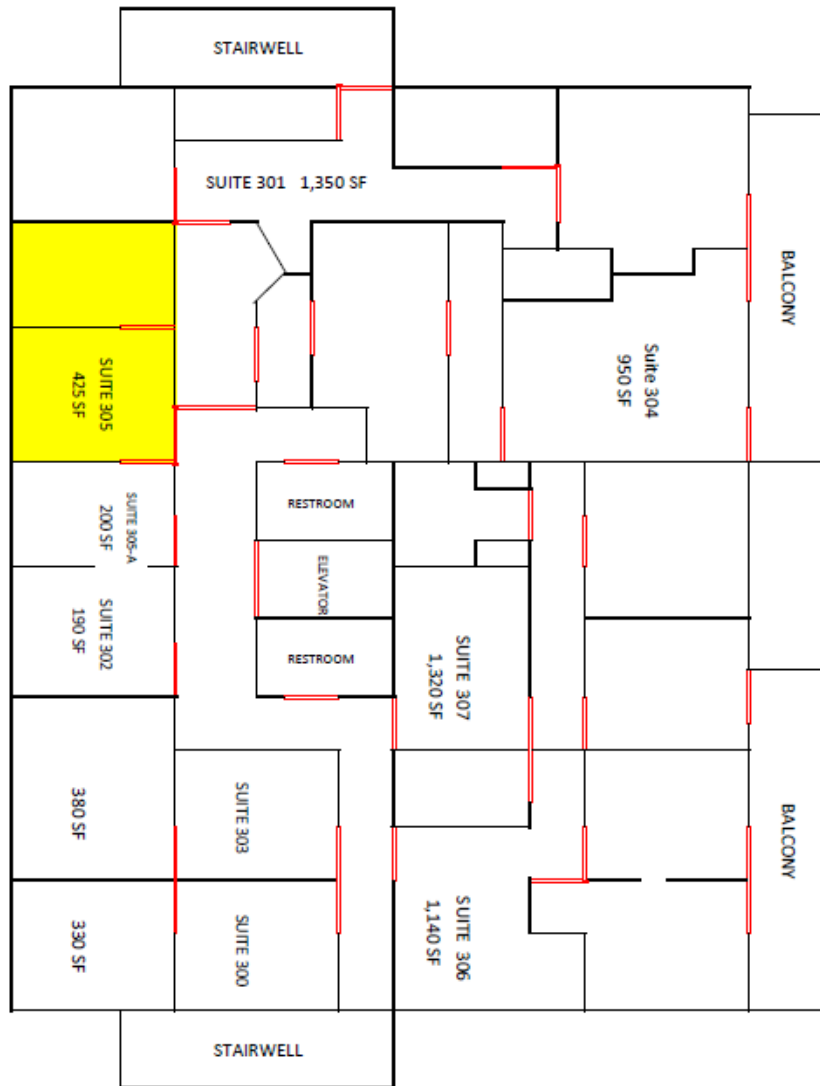
827 Fairways Court

STOCKBRIDGE, GA



Suite 305

425 SF



NOT TO SCALE

LEASING CONTACT:

Tom Ellis:

1215 Eagles Landing Parkway

Suite 204

Stockbridge, GA 30281

Phone: 770-507-5155

Email: info@atlantasouthinc.com / Website: www.atlantasouthinc.com

ATLANTA SOUTH
COMMERCIAL PROPERTIES, INC.



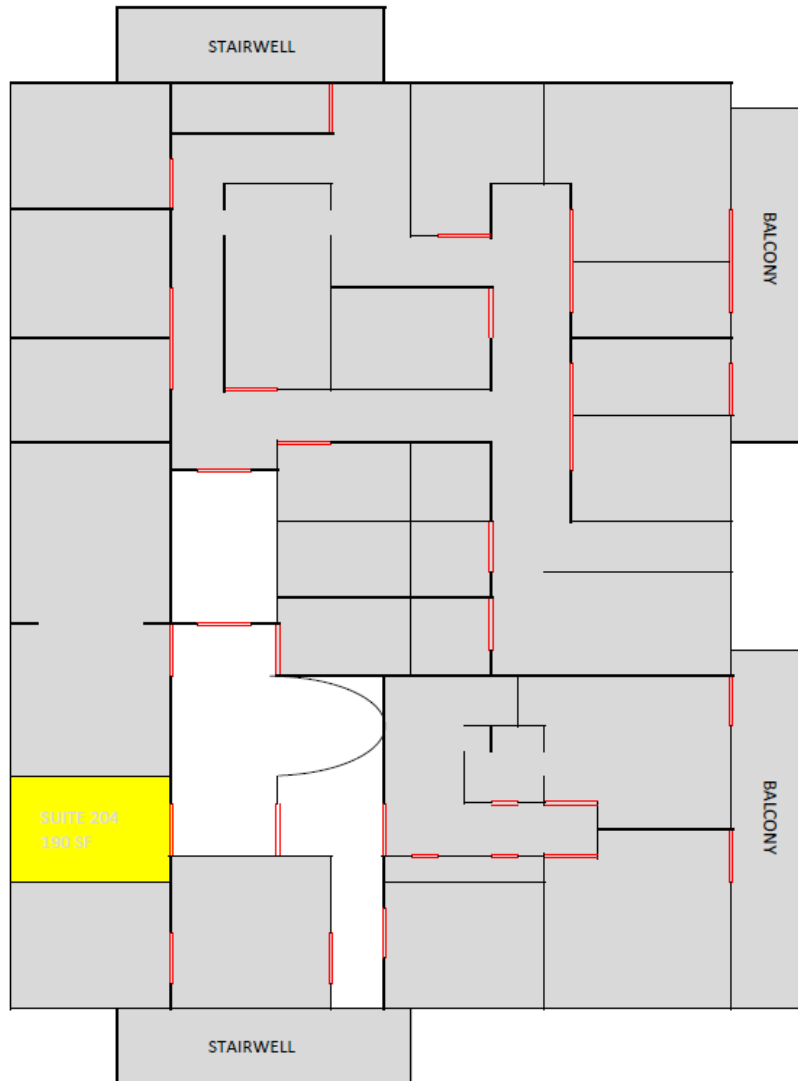
827 Fairways Court

STOCKBRIDGE, GA



Suite 204

190 SF



NOT TO SCALE

LEASING CONTACT:

Tom Ellis:

1215 Eagles Landing Parkway

Suite 204

Stockbridge, GA 30281

Phone: 770-507-5155

Email: info@atlantasouthinc.com / Website: www.atlantasouthinc.com

ATLANTA SOUTH
COMMERCIAL PROPERTIES, INC.

