

115 Westridge Industrial Boulevard McDonough, GA



PROFESSIONAL OFFICE SUITES AVAILABLE

RENTAL RATE: \$25.00 PSF, FULL SERVICE, NO IN-SUITE JANITORIAL

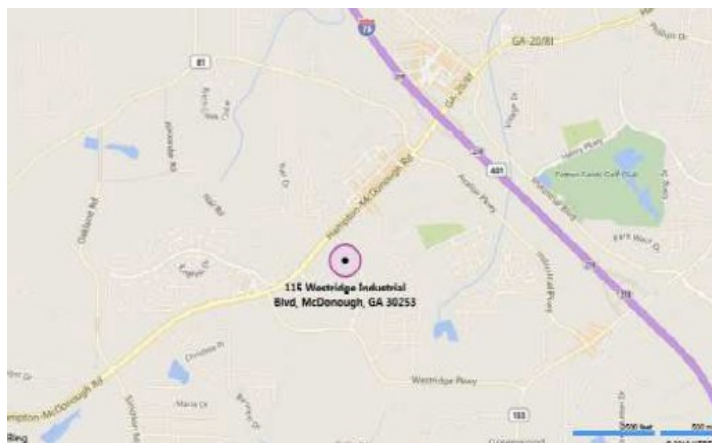
SPACE HIGHLIGHTS

First Floor 3,855 SF

- 8 Private Offices
- Executive Office with Full Restroom
- Large Bull Pen Area
- Conference Room
- Storage
- Breakroom

Second Floor 4,224 SF

- 8 Private Offices
- Large Conference Room
- Receptionist area



NEAR BY AMENITIES

- Restaurants and Hotels & Convenient to I-75

Leasing Contact: Tom Ellis

1215 Eagles Landing Parkway Suite 204

Stockbridge, GA 30281

Phone: 770-507-5155

Email: info@atlantasouthinc.com

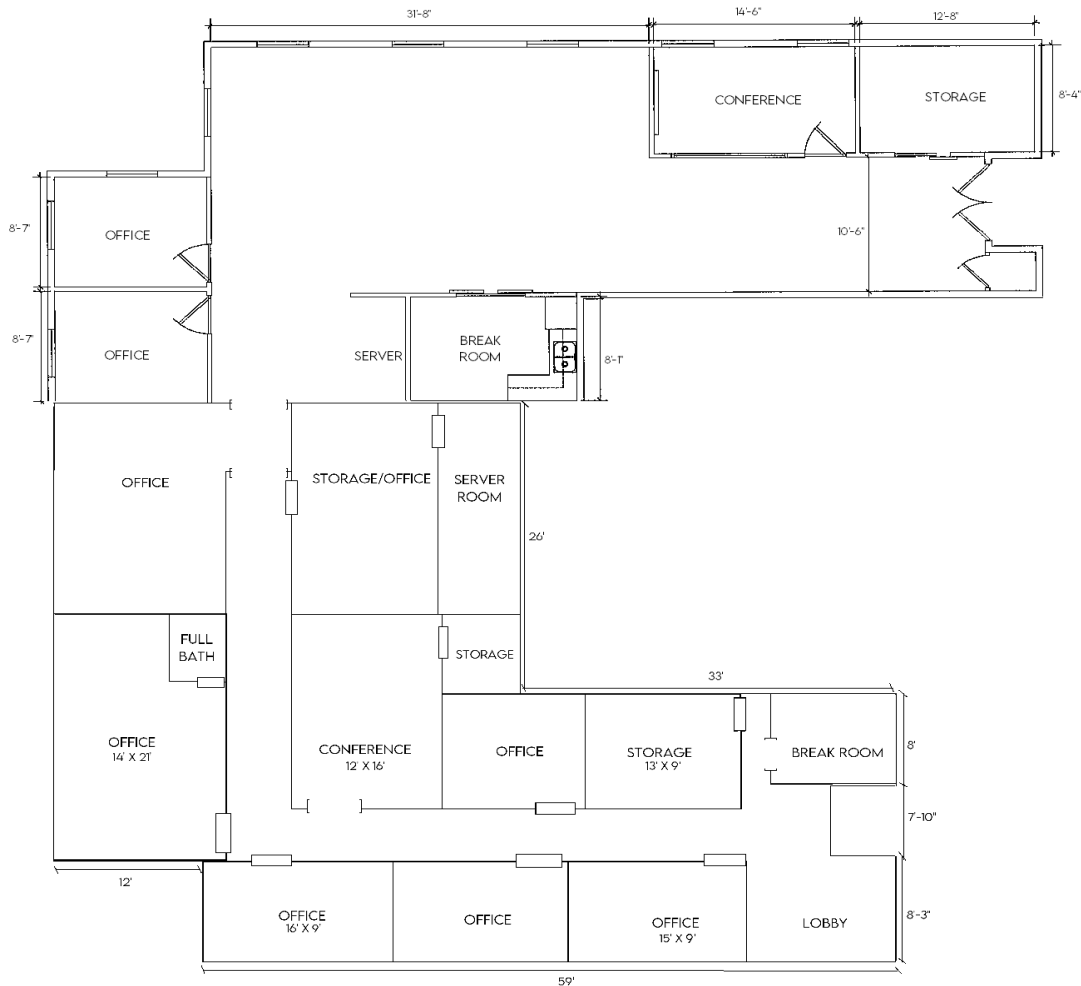
Website: www.atlantasouthinc.com



ATLANTA SOUTH
COMMERCIAL PROPERTIES INC

115 Westridge Industrial Boulevard McDonough, GA

1st Floor 3,855 SF



Leasing Contact:

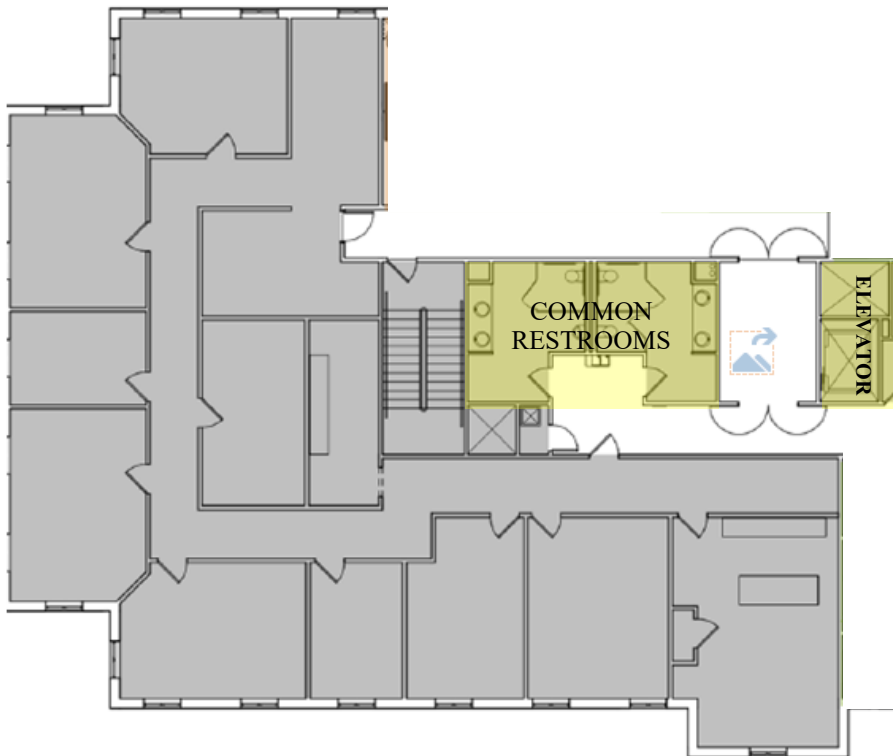
Tom Ellis
1215 Eagles Landing Parkway Suite 204
Stockbridge, GA 30281
Phone: 770-507-5155
Email: info@atlantasouthinc.com
Website:
www.atlantasouthinc.com

ATLANTA SOUTH
COMMERCIAL PROPERTIES INC



115 Westridge Industrial Boulevard McDonough, GA

2nd Floor **4,224 SF (Reflected in Grey)**



Leasing Contact:

Tom Ellis

1215 Eagles Landing Parkway Suite 204
Stockbridge, GA 30281

Phone: 770-507-5155

Email: info@atlantasouthinc.com

Website:

www.atlantasouthinc.com

ATLANTA SOUTH
COMMERCIAL PROPERTIES INC

