



OFFICE SPACE FOR SALE OR LEASE

1 & 10 GRESHAM LANDING · STOCKBRIDGE, GA 30281

\$20.00 PSF NET / +/- 5,256 SF—19,191 SF / Sale Price \$150.00 PSF

Prime Opportunity to locate your Professional Office in this Impressive Multi-Tenant Building!

- Access to Piedmont Henry Medical
- Serene Professional Environment
- Ample Parking
- High Quality Construction
- Access to Interstate 75
- Golf Course Views



ATLANTA SOUTH
COMMERCIAL PROPERTIES, INC.

LEASING INFORMATION:

TOM ELLIS

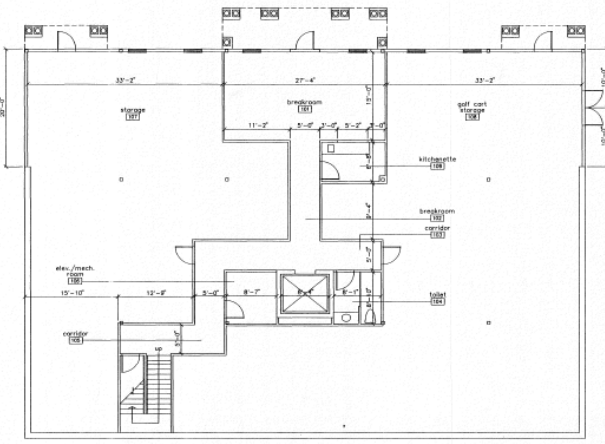
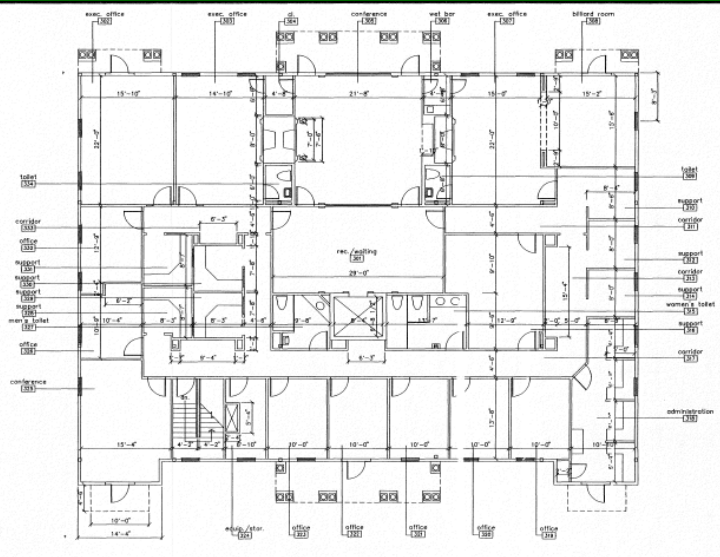
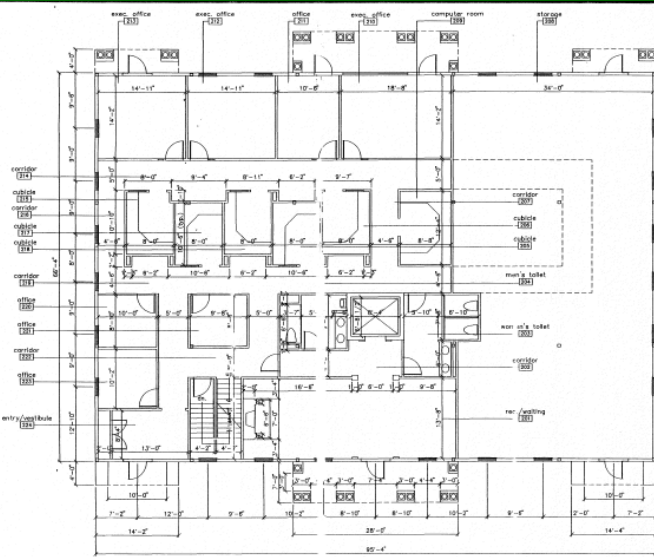
770-507-5155 / info@atlantasouthinc.com

1215 Eagles Landing Parkway Suite 204

Stockbridge, GA 30281



1 Gresham Landing, Stockbridge, Georgia - 30281
\$20.00 PSF NET / +/- 6,397 SF—19,191 SF / Sale Price \$150.00 PSF



LEASING INFORMATION:
TOM ELLIS

770-507-5155 / info@atlantasouthinc.com
 1215 Eagles Landing Parkway Suite 204
 Stockbridge, GA 30281

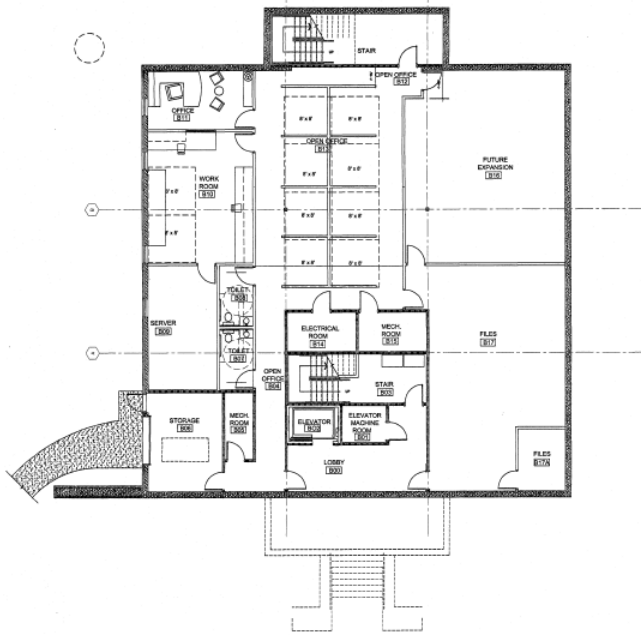
ATLANTA SOUTH
 COMMERCIAL PROPERTIES, INC.

The information contained herein is reliable. While Atlanta South Commercial Properties, Inc. has no reason to doubt its accuracy, we do not guarantee it.

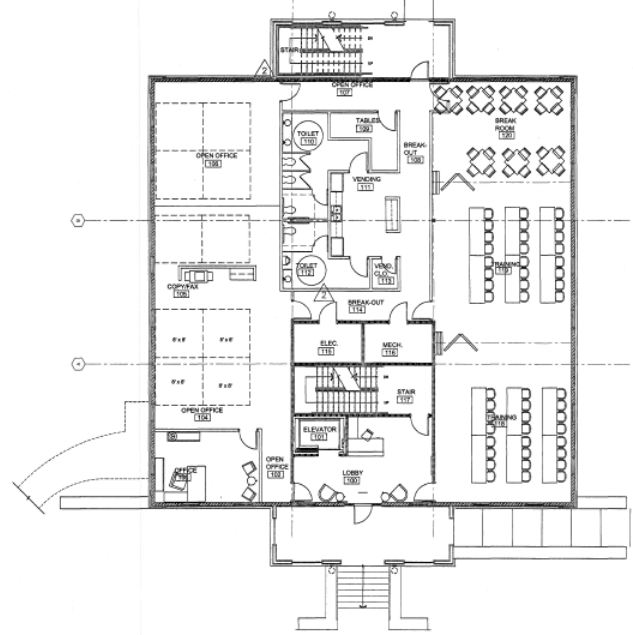


10 Gresham Landing Stockbridge, Georgia 30281

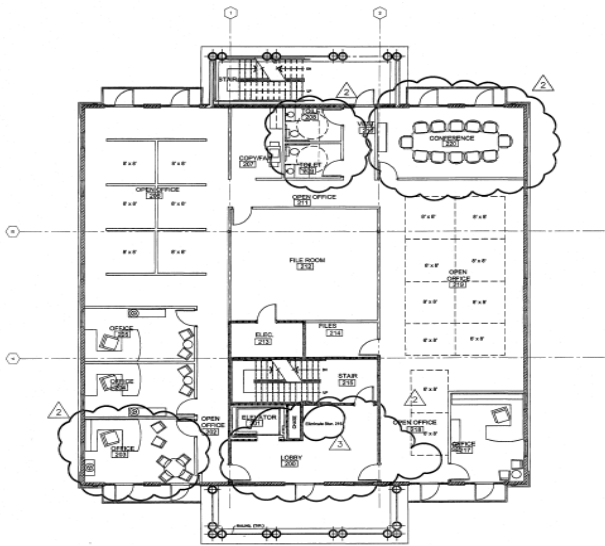
\$20.00 PSF NET
+/- 5,256 SF – 15,768 SF
Sale Price \$150.00 PSF



1 CONCEPTUAL SPACE PLAN-BASEMENT



2 CONCEPTUAL SPACE PLAN-FIRST FLOOR
ALL 1/8" = 1'-0"



3 CONCEPTUAL SPACE PLAN-SECOND FLOOR
ALL 1/8" = 1'-0"



LEASING INFORMATION:

TOM ELLIS

770-507-5155 / info@atlantasouthinc.com
 1215 Eagles Landing Parkway Suite 204
 Stockbridge, GA 30281



The information contained herein is reliable. While Atlanta South Commercial Properties, Inc. has no reason to doubt its accuracy, we do not guarantee it.



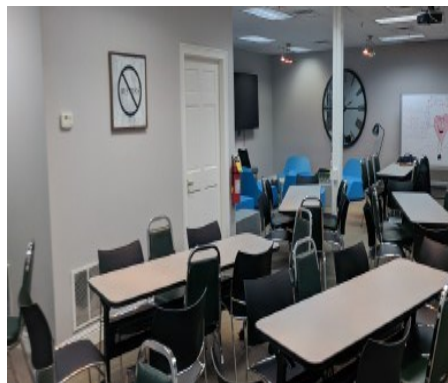
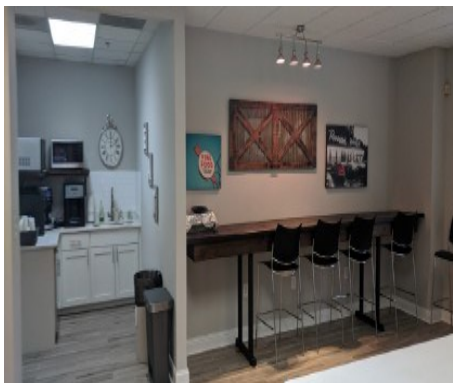
1 & 10 Gresham Landing Stockbridge, Georgia 30281

\$20.00 PSF NET

Building 1 +/- 19,191 SF

Building 2 +/- 15,768 SF

Sale Price \$150.00 PSF



LEASING INFORMATION:

TOM ELLIS

770-507-5155 / info@atlantasouthinc.com

1215 Eagles Landing Parkway Suite 204

Stockbridge, GA 30281

ATLANTA SOUTH
COMMERCIAL PROPERTIES, INC.

The information contained herein is reliable. While Atlanta South Commercial Properties, Inc. has no reason to doubt its accuracy, we do not guarantee it.