

# 175 COUNTRY CLUB DRIVE

Stockbridge

**Rental Rate \$22.00 MG**

## HIGHLIGHTS

**Suite 300A 1,505 SF**

### Newly Built Suite

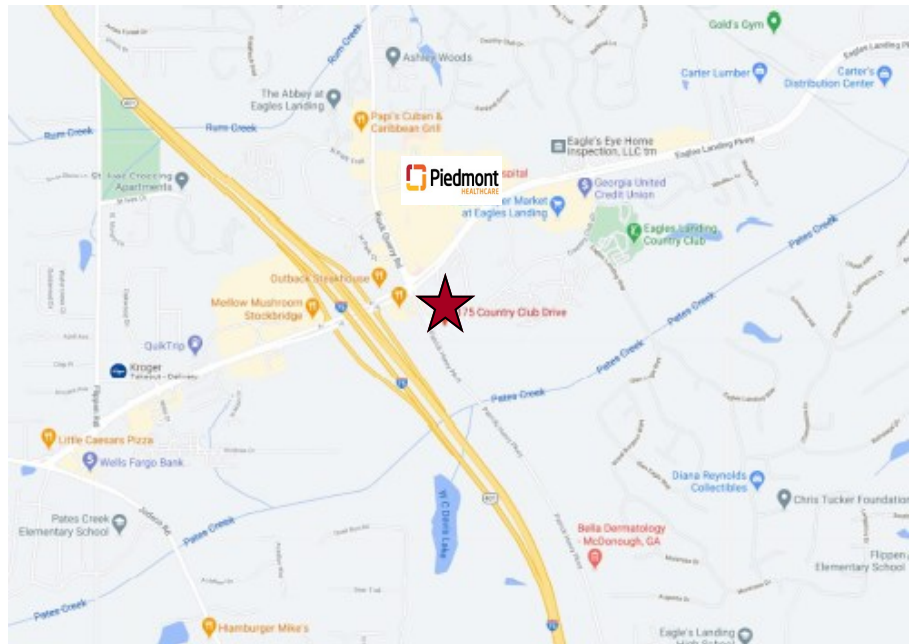
- 4 Private Offices
- Spacious Conference Room
- Large Bull Pen
- Receptionist Area
- Kitchen
- Restroom

**Suite 300 C 1,505 SF**  
**Road Front Corner Suite**

- 4 Large Offices
- Large Bull Pen Area
- Spacious Conference Room
- Receptionist Area
- Breakroom

### NEAR BY AMMENITIES

- Henry Piedmont Medical Center
- Interstate Access
- Atlanta Hartsfield Jackson Airport
- Newly Constructed Lodging



**ATLANTA SOUTH**  
COMMERCIAL PROPERTIES, INC.

### LEASING CONTACT:

**Tom Ellis:**

1215 Eagles landing Parkway #204 Stockbridge, GA 30281

Phone: 770-507-5155

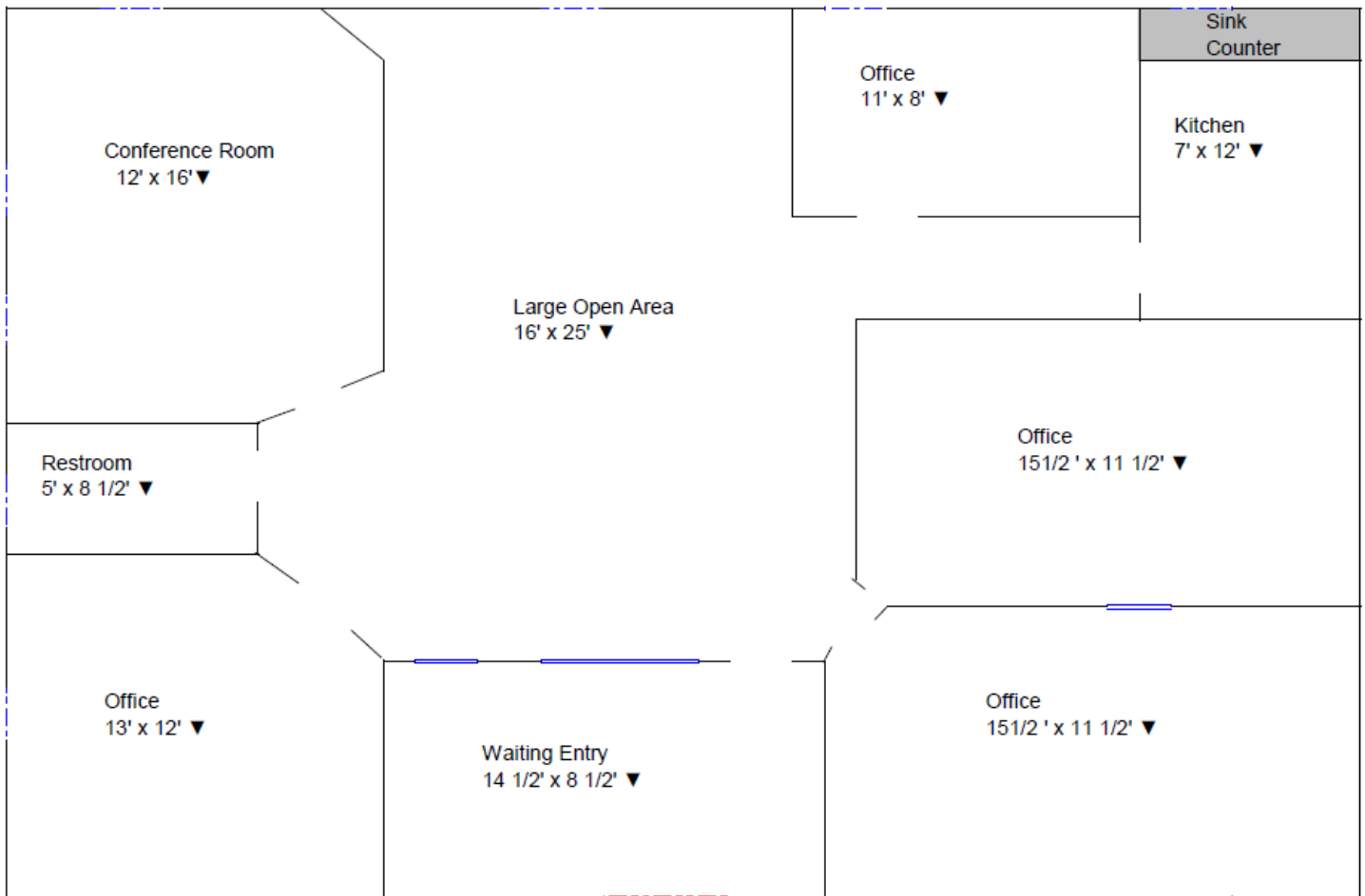
Email: [info@atlantasouthinc.com](mailto:info@atlantasouthinc.com) / Website: [www.atlantasouthinc.com](http://www.atlantasouthinc.com)



# 175 COUNTRY CLUB DRIVE

Suite 300 A

1,505 SF



**ATLANTA SOUTH**  
COMMERCIAL PROPERTIES, INC.

**LEASING CONTACT:**

**Tom Ellis:**

1215 Eagles Landing Parkway #204 Stockbridge, GA 30281  
Phone: 770-507-5155

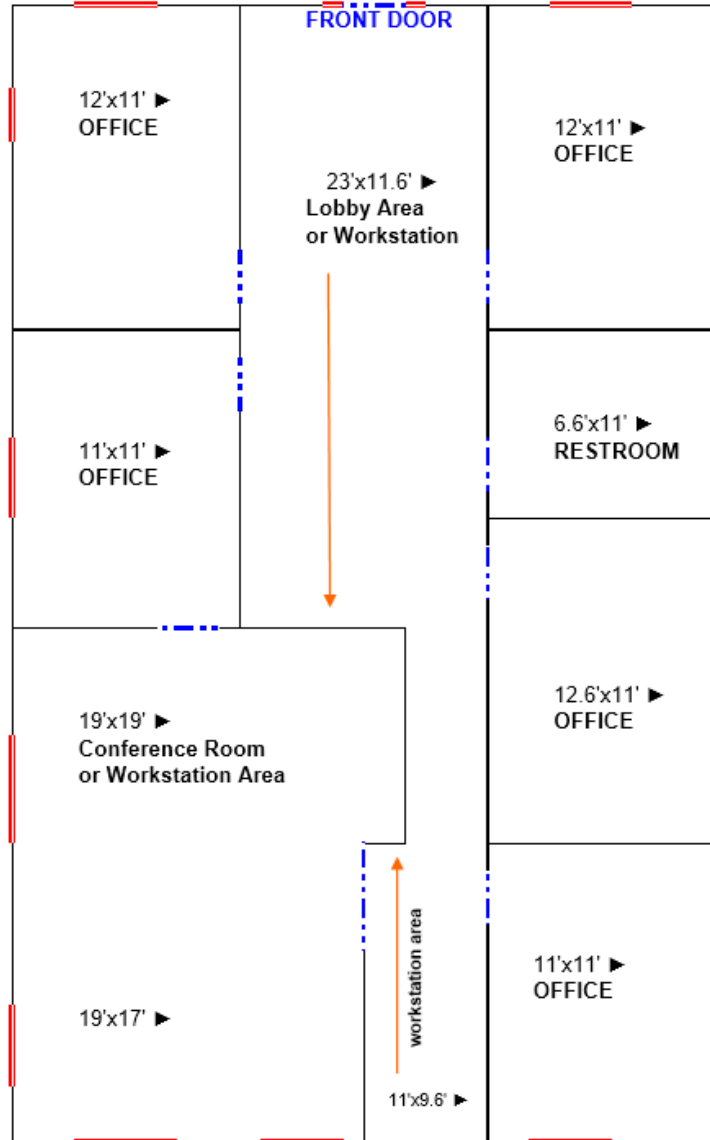
Email: [info@atlantasouthinc.com](mailto:info@atlantasouthinc.com) / Website: [www.atlantasouthinc.com](http://www.atlantasouthinc.com)



# 175 COUNTRY CLUB DRIVE

Suite 300 C

1,500SF



**ATLANTA SOUTH**  
COMMERCIAL PROPERTIES, INC.

**LEASING CONTACT:**

**Tom Ellis:**

1215 Eagles Landing Parkway #204 Stockbridge, GA 30281  
Phone: 770-507-5155

Email: [info@atlantasouthinc.com](mailto:info@atlantasouthinc.com) / Website: [www.atlantasouthinc.com](http://www.atlantasouthinc.com)