

115 Westridge Industrial Boulevard McDonough, GA



**AVAILABLE
END OF 2022**

PROFESSIONAL OFFICE SUITES AVAILABLE

RENTAL RATE: \$22.00 SF Full Service no in suite janitorial

SPACE HIGHLIGHTS

Second Floor

10,672SF

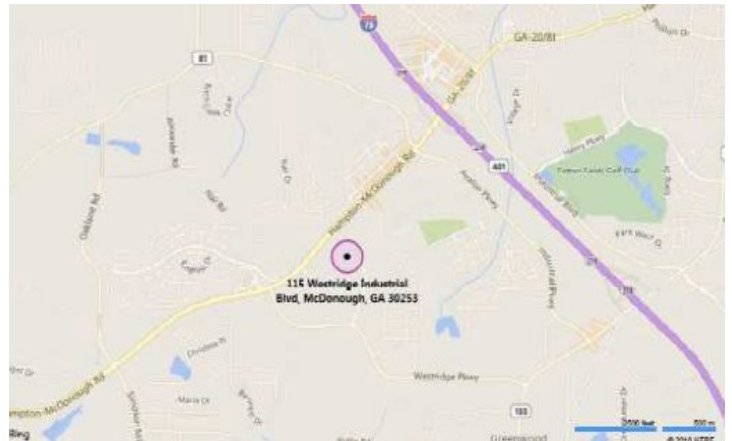
May be divided into 5,336 SF

- 23 Private Offices
- Large Conference Room
- Receptionist area
- 2 Break Rooms
- 2 copier rooms
- 2 Restrooms

Third Floor Suite 380

1,200SF

- 3 Private Offices
- Break Room
- Storage



NEAR BY AMENITIES

- Restaurants and Hotels & Convenient to I-75

Leasing Contact:

Tom Ellis
1215 Eagles Landing Parkway Suite 204
Stockbridge, GA 30281
Phone: 770-507-5155
Email: info@atlantasouthinc.com
Website: www.atlantasouthinc.com

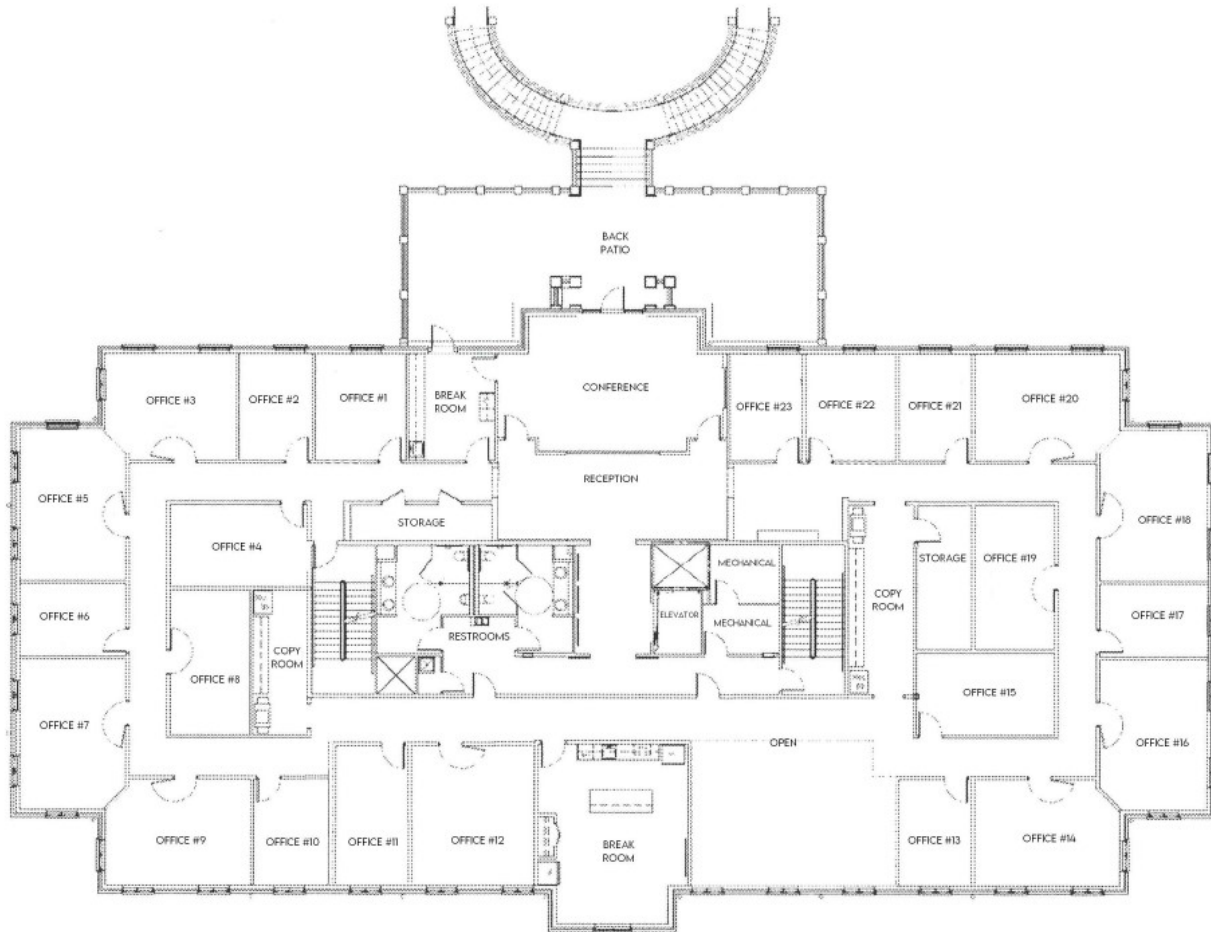


ATLANTA SOUTH
COMMERCIAL PROPERTIES INC

The information contained herein is reliable. While Atlanta South Commercial Properties, Inc. has no reason to doubt its accuracy, we do not guarantee it.

115 Westridge Industrial Boulevard McDonough, GA

2nd Floor 10,672 SF



2ND FLOOR

115 WESTRIDGE INDUSTRIAL BLVD SUITE 200
MCDONOUGH, GA 30253

Leasing Contact:

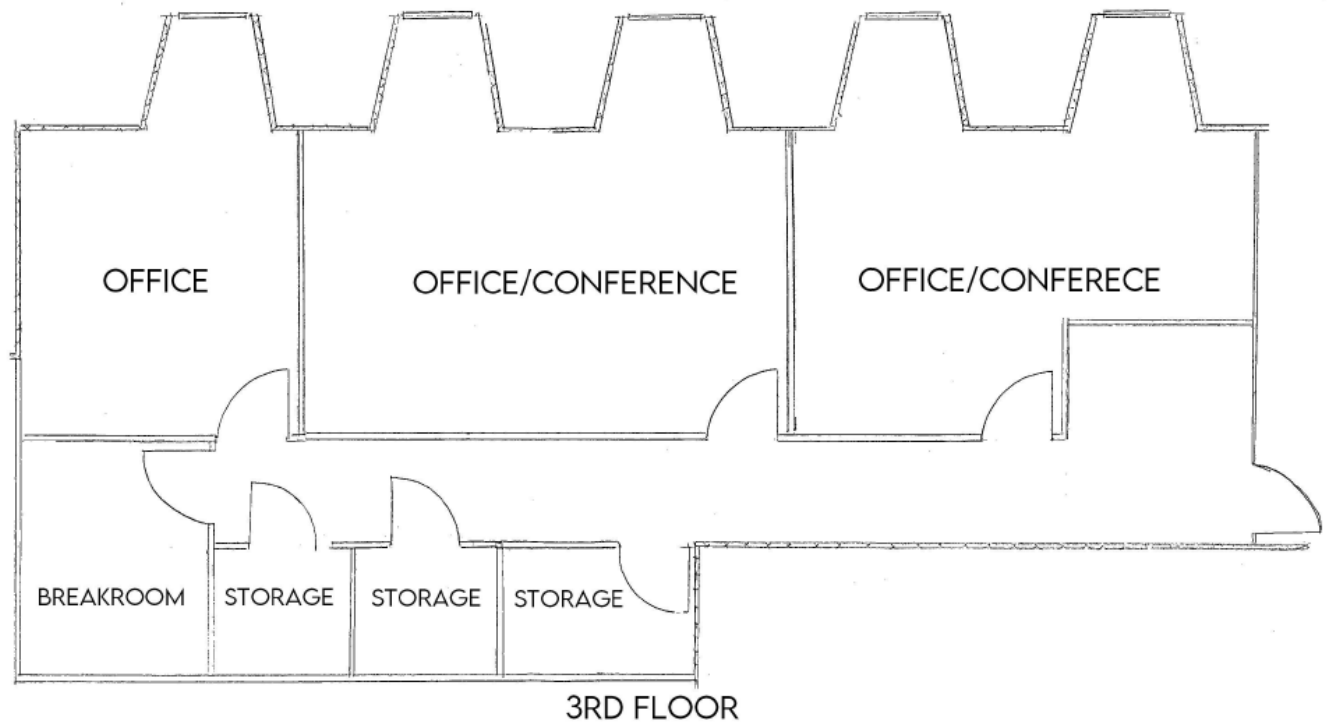
Tom Ellis
1215 Eagles Landing Parkway Suite 204
Stockbridge, GA 30281
Phone: 770-507-5155

ATLANTA SOUTH
COMMERCIAL PROPERTIES INC



115 Westridge Industrial Boulevard McDonough, GA

3rd Floor 1,200 SF



APPROX. 1,200 SQ FT

115 WESTRIDGE INDUSTRIAL BLVD STE 380
MCDONOUGH, GA 30253

Leasing Contact:

Tom Ellis

1215 Eagles Landing Parkway Suite 204

Stockbridge, GA 30281

Phone: 770-507-5155

Email: info@atlantasouthinc.com

Website:

www.atlantasouthinc.com

ATLANTA SOUTH
COMMERCIAL PROPERTIES INC

