



1215 Eagles Landing Parkway

RENTAL RATE \$22.00 MG

SPACE HIGHLIGHTS

Suite 203 1,500 SF

- 1 Private Office
- 1 Restroom
- Large Bull Pen Area



Suite 210/211 3,240 SF

- 1 Executive Office w/ Private Restroom, and conference room
- 8 Private Office
- 2 Restrooms
- Large Conference Room
- Storage Closet
- Copier Area
- Bull Pen Area

NEARBY AMENITIES:

- Henry Piedmont Medical Center
- Restaurants
- Newly Constructed Lodging
- Interstate 75 Access
- 20 minutes to Atlanta Hartsfield Jackson Airport



LEASING CONTACT:

Tom Ellis

ATLANTA SOUTH
COMMERCIAL PROPERTIES, INC.

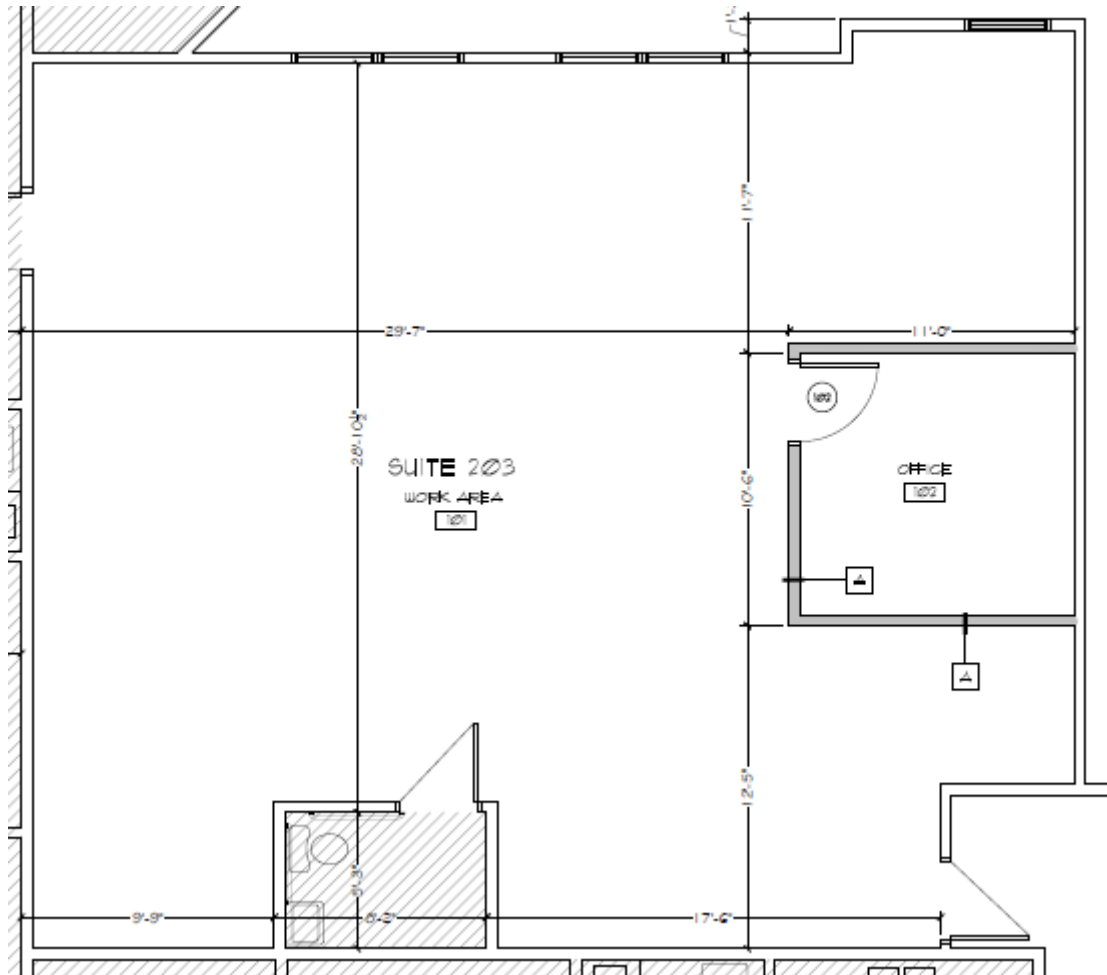
1215 Eagles Landing Parkway Suite 204
Stockbridge, GA 30281
Phone: 770-507-5155

Email: info@atlantasouthinc.com / Website: www.atlantasouthinc.com



1215 Eagles Landing Parkway

Suite 203



LEASING CONTACT:

Tom Ellis:

ATLANTA SOUTH
COMMERCIAL PROPERTIES, INC.

1215 Eagles Landing Parkway Suite 204, Stockbridge, GA 30281

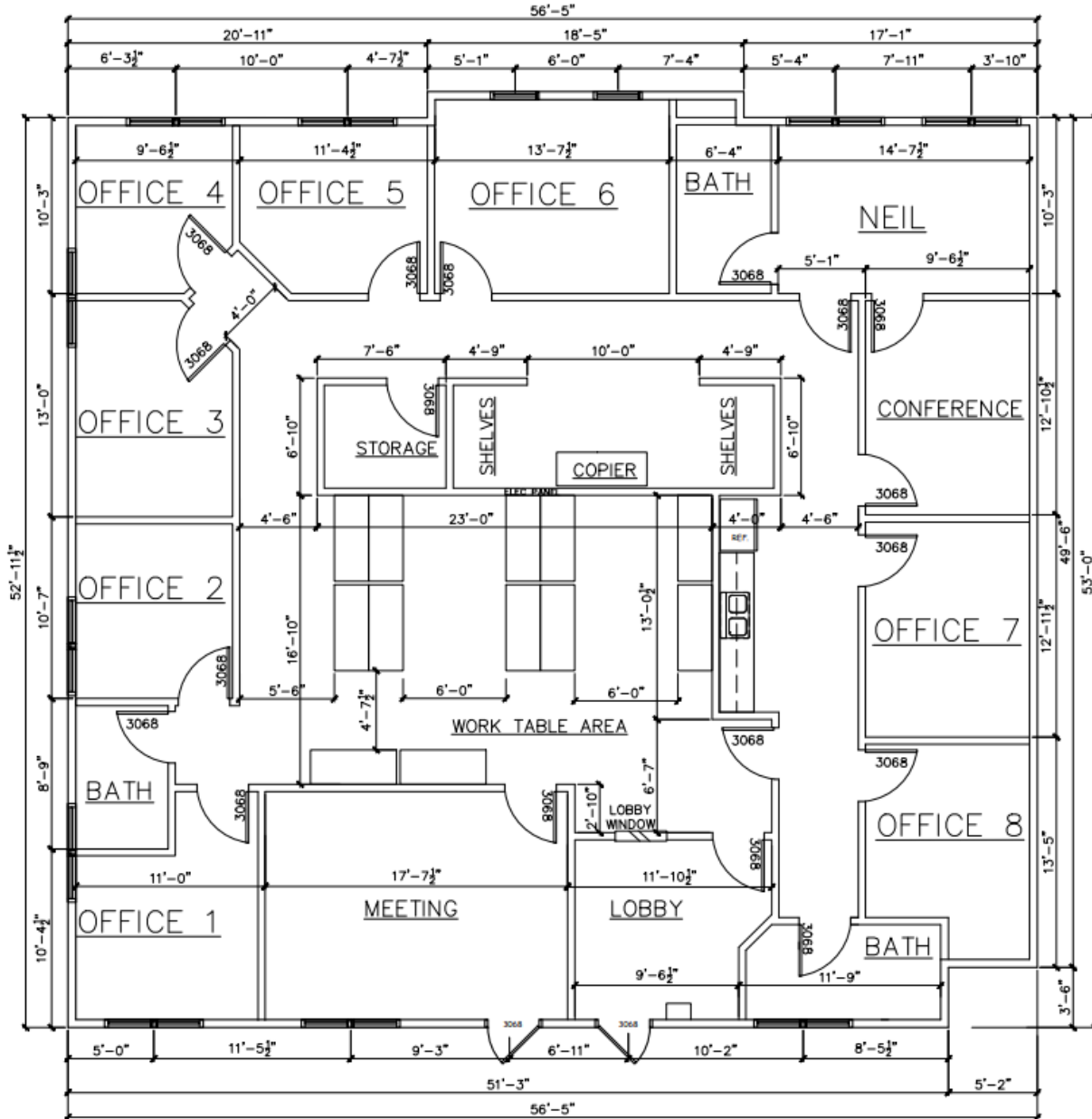
Phone: 770-507-5155

Email: info@atlantasouthinc.com / Website: www.atlantasouthinc.com



1215 Eagles Landing Parkway

Suite 210/211 3,240SF



LEASING CONTACT:

Tom Ellis:

ATLANTA SOUTH
COMMERCIAL PROPERTIES, INC.

1215 Eagles Landing Parkway Suite 204, Stockbridge, GA 30281

Phone: 770-507-5155

Email: info@atlantasouthinc.com / Website: www.atlantasouthinc.com