

Market Place Crossing

3300 Highway 42 & Market Place Boulevard

Locust Grove, GA



+/-2.83 ACRES
Zoned O & I

BANK DRIVE-THRU

has been approved by the City of
Locust Grove

Direct Access to Highway 42
Approved for up to 15,000 SQ

FT total development on site

Great location with good
Traffic Counts and excellent
Demographics

Lot for Sale: \$825,000.00

**New Traffic Light under
construction**



LEASING CONTACT:

Tom Ellis:

245 Country Club Drive
Suite 300D
Stockbridge, GA 30281
Phone: 770-507-5155

ATLANTA SOUTH
COMMERCIAL PROPERTIES, INC.

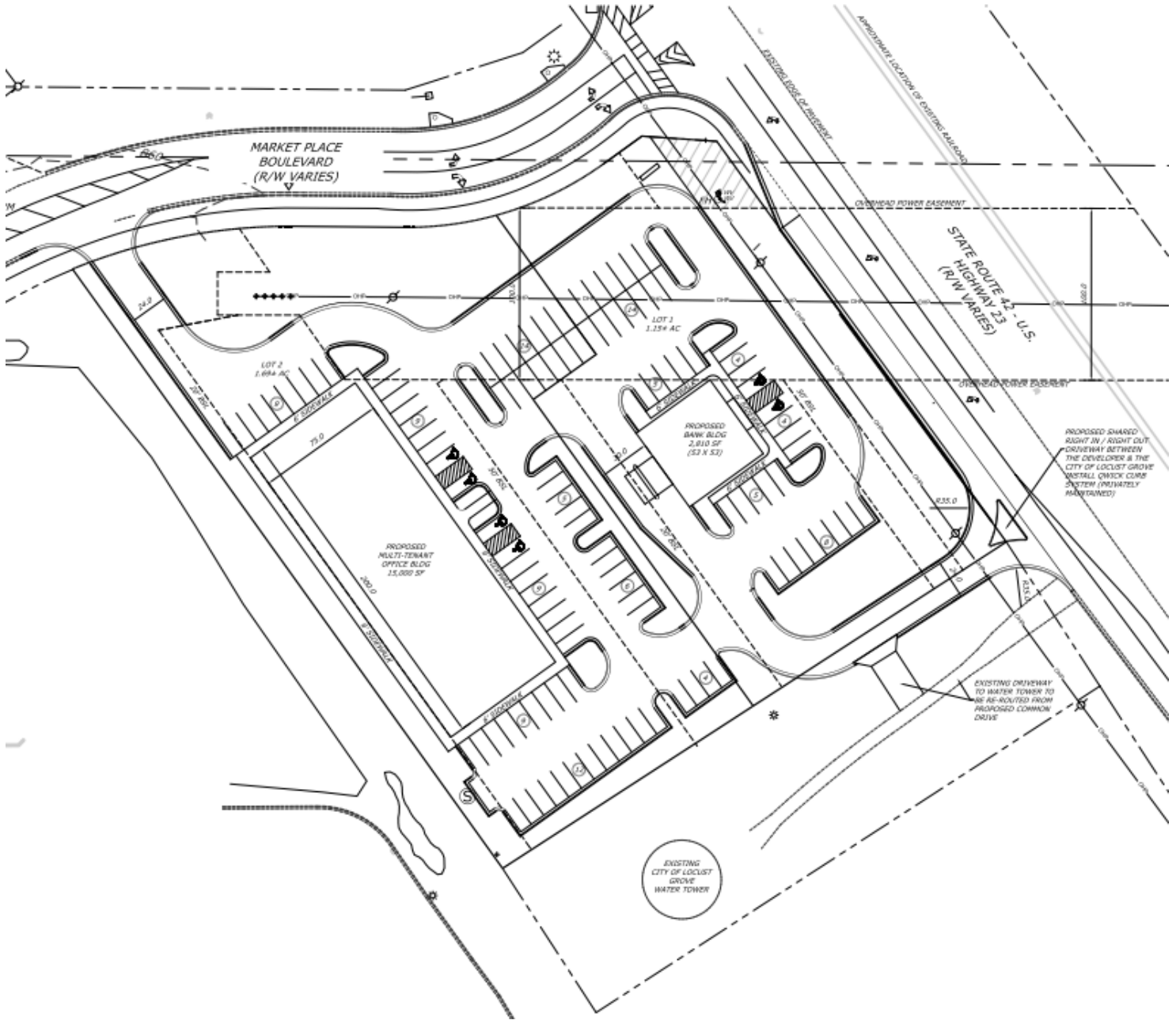


Market Place Crossing

3300 Highway 42 & Market Place Boulevard

Locust Grove, GA

+/- 2.83 ACRES \$825,000



**LEASING
CONTACT:**

Tom Ellis:
245 Country Club Drive
Suite 300D
Stockbridge, GA 30281

ATLANTA SOUTH
COMMERCIAL PROPERTIES, INC.