



1215 Eagles Landing Parkway

RENTAL RATE \$18.50 MG

SPACE HIGHLIGHTS

Suite 204 919 SF

- 2 Private Offices
- Break Room
- Receptionist Area



Suite 210/211 3,240 SF

- 4 Exam Rooms
- Large Nurses Station
- 3 Private Offices
- Break Room
- Receptionist Area
- Private File Room
- Sit Down Waiting Area
- 2 Rest Rooms



NEARBY AMENITIES:

- Henry Piedmont Medical Center
- Restaurants
- Newly Constructed Lodging
- Interstate 75 Access
- 20 minutes to Atlanta Hartsfield

LEASING CONTACT:

Tom Ellis

ATLANTA SOUTH
COMMERCIAL PROPERTIES, INC.

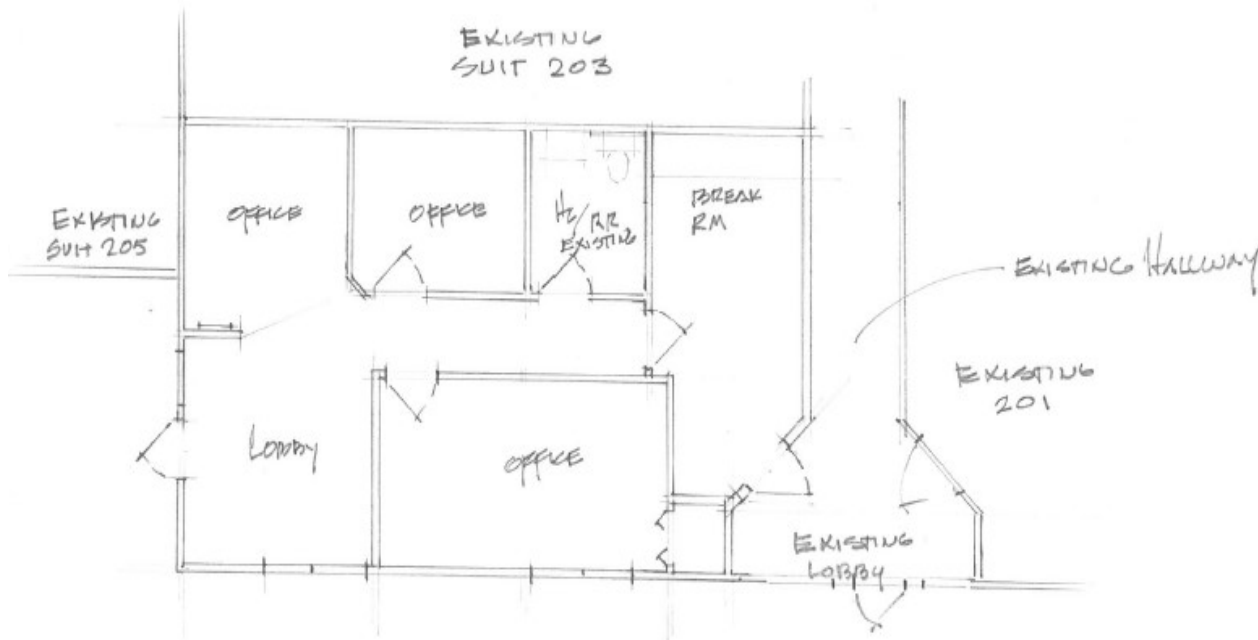
1215 Eagles Landing Parkway Suite 204
Stockbridge, GA 30281
Phone: 770-507-5155

Email: info@atlantasouthinc.com / Website: www.atlantasouthinc.com



1215 Eagles Landing Parkway

Suite 204



1215 EAGLES LANDING
SUITE 204
FOR RJR MANAGEMENT
SCALE 1/8" = 1'-0"

LEASING CONTACT:

Tom Ellis:

ATLANTA SOUTH
COMMERCIAL PROPERTIES, INC.

1215 Eagles Landing Parkway Suite 204, Stockbridge, GA 30281

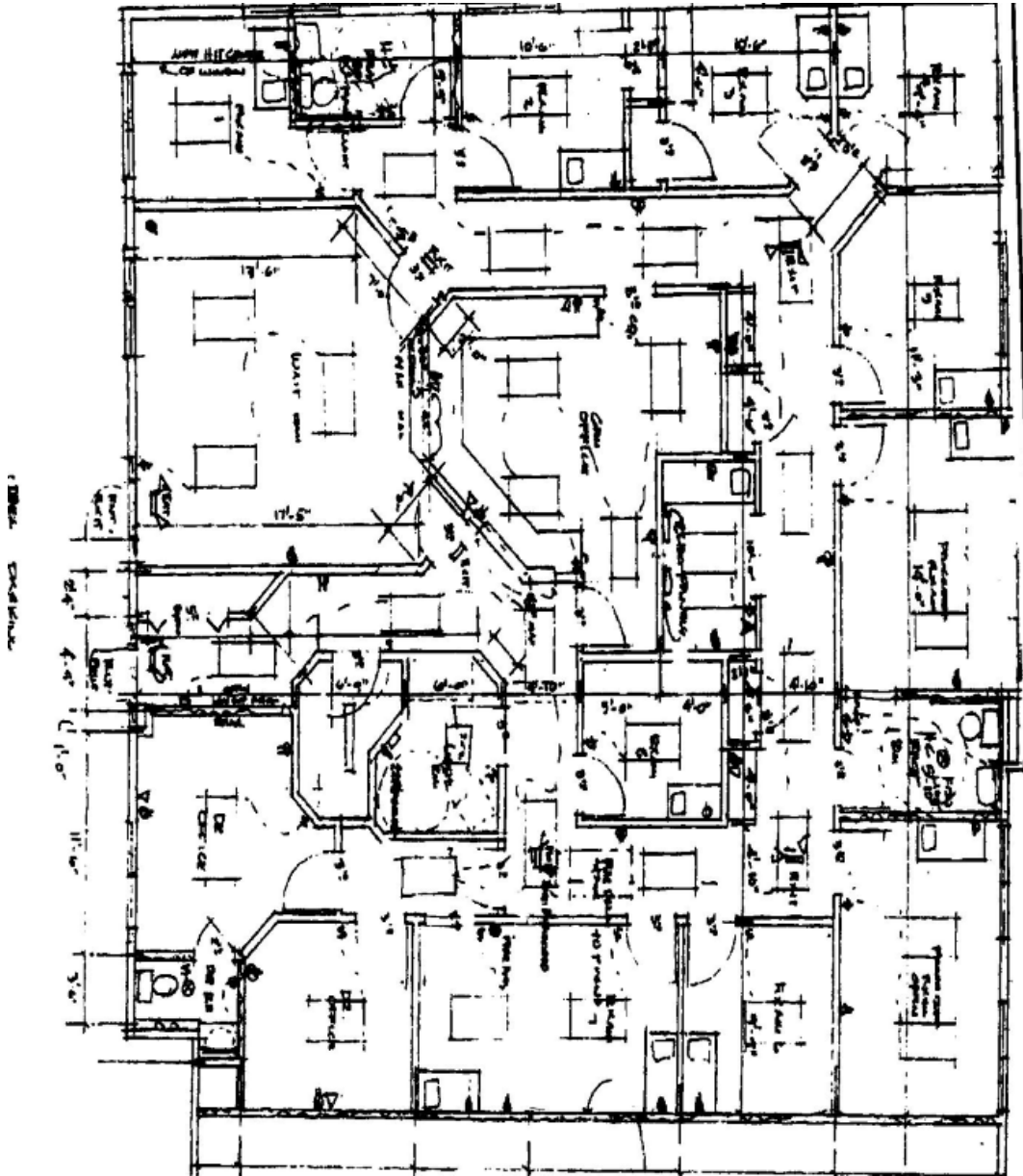
Phone: 770-507-5155

Email: info@atlantasouthinc.com / Website: www.atlantasouthinc.com



1215 Eagles Landing Parkway

Suite 210/211



LEASING CONTACT:

Tom Ellis:

ATLANTA SOUTH
COMMERCIAL PROPERTIES, INC.

1215 Eagles Landing Parkway Suite 204, Stockbridge, GA 30281

Phone: 770-507-5155

Email: info@atlantasouthinc.com / Website: www.atlantasouthinc.com