

115 Westridge Industrial Boulevard McDonough, GA



PROFESSIONAL OFFICE SUITES AVAILABLE

RENTAL RATE: \$18.00 SF Full Service no in suite janitorial



LEASING CONTACT:

Tom Ellis:

245 Country Club Drive
Suite 300D
Stockbridge, GA 30281
Phone: 770-507-5155

Email: info@atlantasouthinc.com / Website: www.atlantasouthinc.com

SPACE HIGHLIGHTS

Suite 115 3,200 SF
Suite may be broken down into smaller
1,500 SF suite.

- 2 Large Bull Pen Areas
- Large Conference room
- Break Room

NEAR BY AMMENITIES

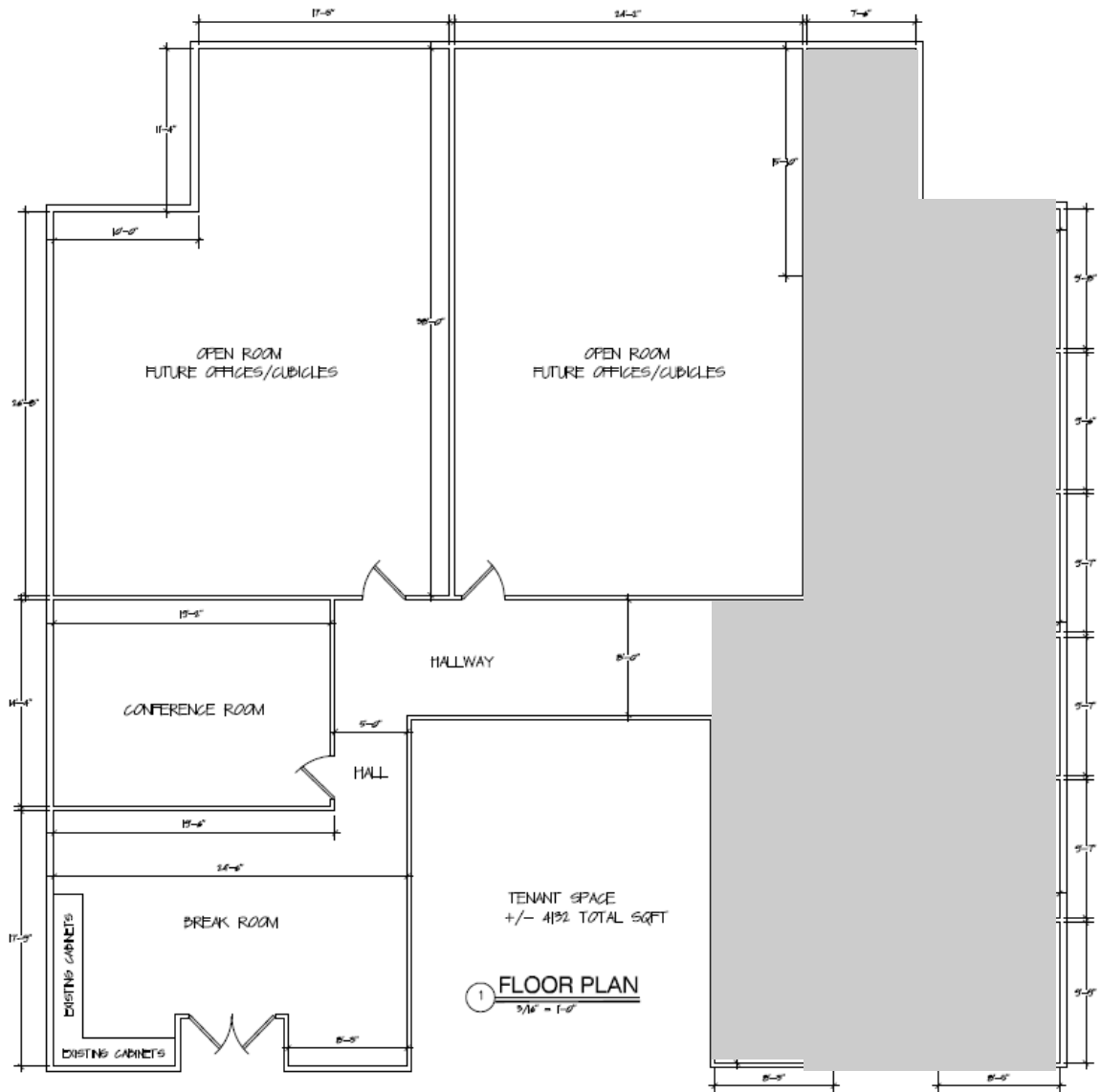
- Piedmont Henry Hospital
- Within walking distance to restaurants, banks, etc.
- Convenient to I-75

ATLANTA SOUTH
COMMERCIAL PROPERTIES, INC.

115 Westridge Boulevard

McDonough, GA

SUITE 115



LEASING CONTACT:

Tom Ellis:
 245 Country Club Drive
 Suite 300D
 Stockbridge, GA 30281
 Phone: 770-507-5155
 Email: info@atlantasouthinc.com / Website: www.atlantasouthinc.com



ATLANTA SOUTH
 COMMERCIAL PROPERTIES, INC.

The information contained herein is reliable. While Atlanta South Commercial Properties, Inc. has no reason to doubt its accuracy, we do not guarantee it.